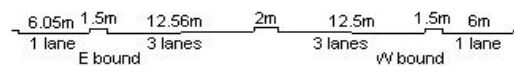


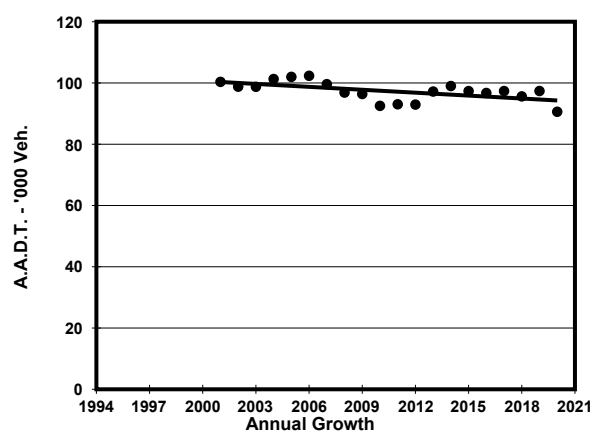
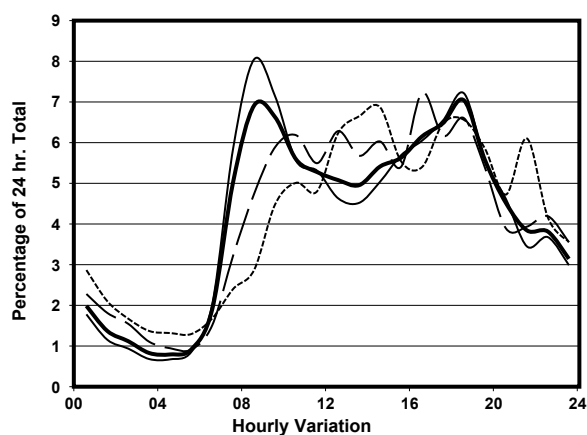
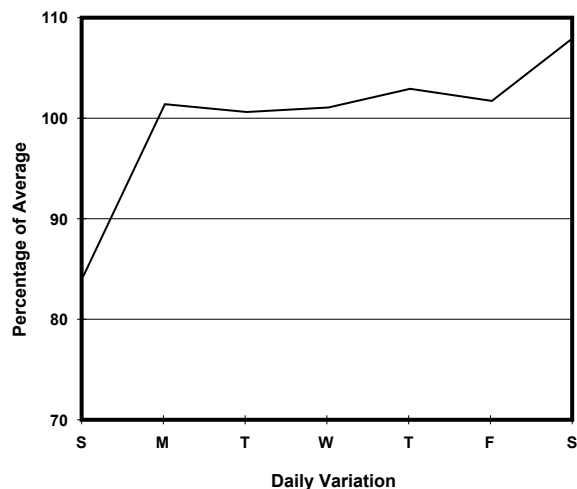
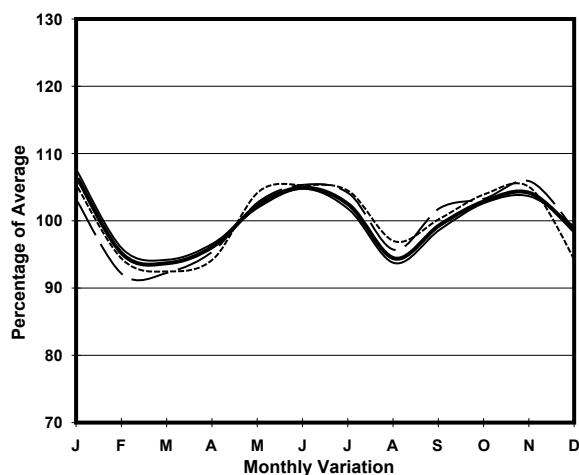
YEAR 2020

LINK KWUN TONG BYPASS <K77> (from WAI YIP ST to CHEUNG YIP ST)

CORE STATION 3023
ROAD NETWORK MAJOR
ROAD TYPE EXPRESSWAY



1. TRAFFIC FLOW VARIATION AND GROWTH



— All day — Mon.- Fri. Sat. - - - - - Sun.

2. TRAFFIC CHARACTERISTICS (BY DIRECTION)

Parameter	All - Day	Mon. - Fri.	Sat.	Sun.
EAST BOUND				
A.A.D.T.	49570	51160	53270	40940
R 12 / 24 - %	68.9	70.5	67.7	60.5
R 16 / 24 - %	87.8	89	85.4	83.4
AM Peak Hour	0900-1000	0900-1000	0900-1000	0900-1000
One-way flow at AM peak hour	3300	3770	2940	1500
T - % (AM)	-	-	-	-
PM Peak Hour	1800-1900	1800-1900	1600-1700	1800-1900
One-way flow at PM peak hour	3500	3740	4300	2900
T - % (PM)	-	-	-	-
Prop.of commercial vehicles - 16 hr.	-	-	-	-
WEST BOUND				
A.A.D.T.	41030	41610	45520	36110
R 12 / 24 - %	71.7	72.9	70.4	66.5
R 16 / 24 - %	88.1	88.8	87.4	84.9
AM Peak Hour	0800-0900	0800-0900	0900-1000	0900-1000
One-way flow at AM peak hour	3270	3860	2880	1950
T - % (AM)	-	-	-	-
PM Peak Hour	1800-1900	1800-1900	1800-1900	1700-1800
One-way flow at PM peak hour	2870	2960	3370	2210
T - % (PM)	-	-	-	-
Prop.of commercial vehicles - 16 hr.	-	-	-	-

3. OTHER INFORMATION AND COMMENT